



MONTHLY MEMBERSHIP PROGRESS REPORT

District 5M 9

Results as of: 12/31/2018

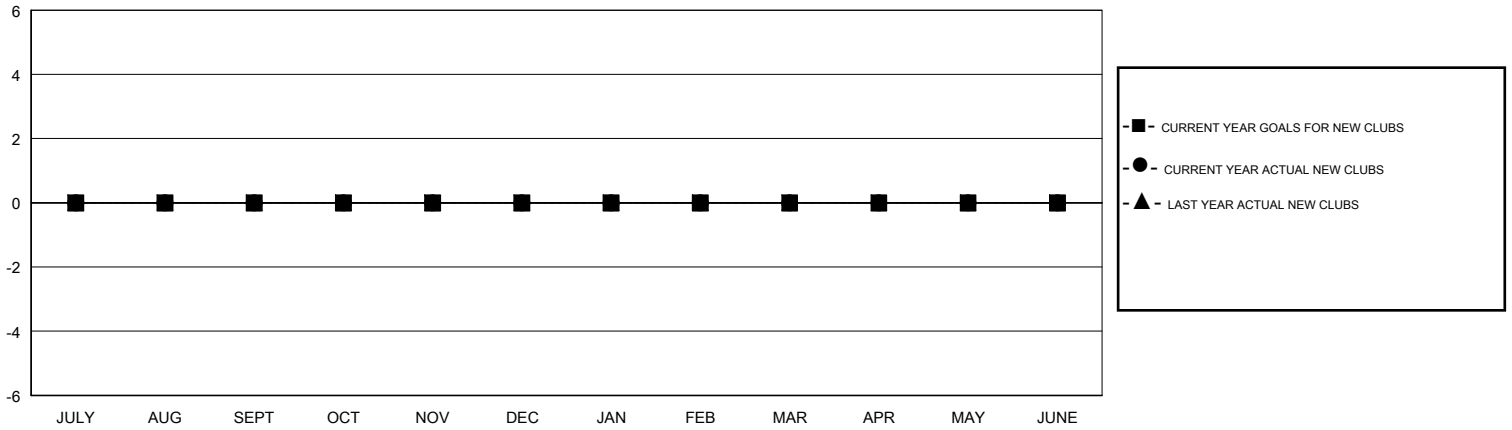
GMT: OPEN

LOCATION MINNESOTA

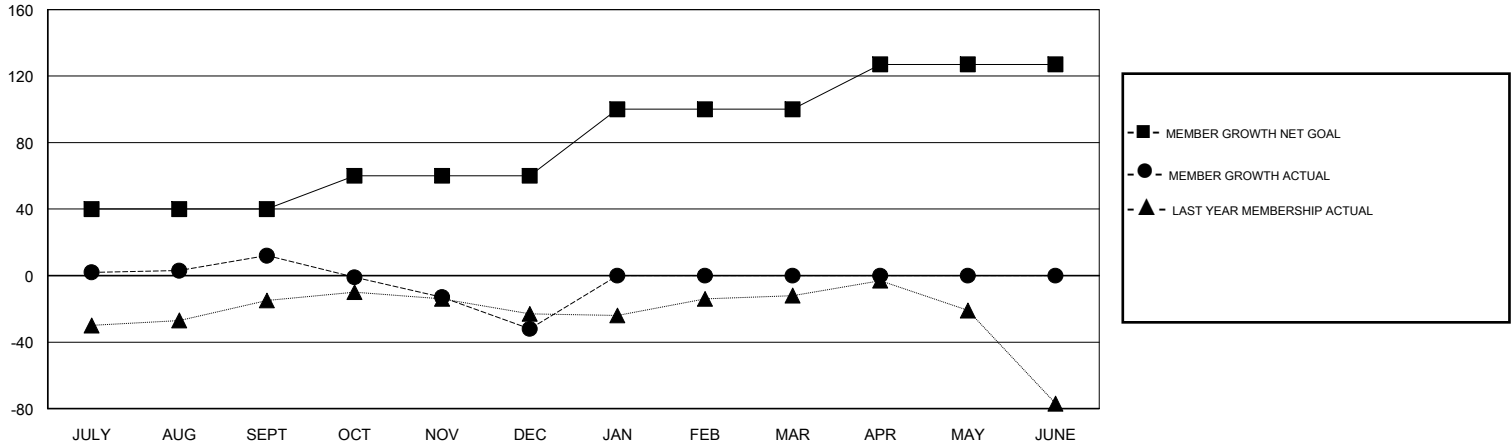
GMT CA

Clubs				Members			
RESULTS FOR 2018-2019				RESULTS FOR 2018-2019			
QUARTER	NEW CLUB GOAL	NEW CLUBS	DROPPED CLUBS	QUARTER	MEMBER GROWTH NET GOAL	MEMBER GROWTH ACTUAL	DROPPED MEMBERS ACTUAL (including transfers)
JULY/AUG/SEPT	0	0	0	JULY/AUG/SEPT	40	71	46
OCT/NOV/DEC	0	0	1	OCT/NOV/DEC	20	29	68
JAN/FEB/MAR	0	0	0	JAN/FEB/MAR	40	0	0
APR/MAY/JUNE	0	0	0	APR/MAY/JUNE	27	0	0

GOALS AND ACTUAL NEW CLUBS CUMULATIVE



GOALS AND ACTUAL MEMBERS CUMULATIVE



DROPPED CLUBS: 1	38 CLUBS OF 67 ADDED 1 OR MORE NEW MEMBERS	<u>GENDER DISTRIBUTION</u>	
		MALE	1,368 (62.52%)
		FEMALE	820 (37.48%)
		Women Percentage Fiscal Year Goal: 0%	
<u>DROPPED MEMBERS</u>		TOTAL FAMILY UNIT MEMBERS	702
DECEASED	17	FAMILY MEMBERS PAYING HALF DUES	354
CLUB CANCELLED	0		
OTHER	97		
TOTAL	114		

[CLICK HERE FOR CUMULATIVE MEMBERSHIP DATA](#)